

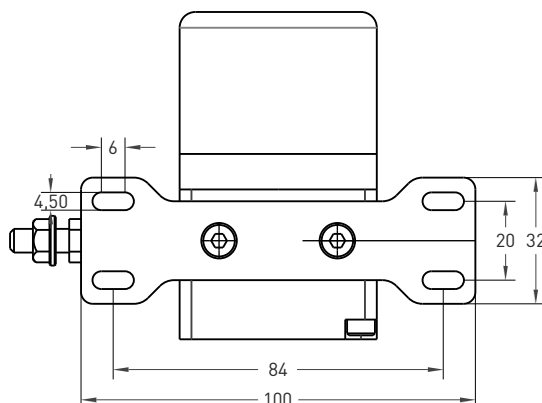
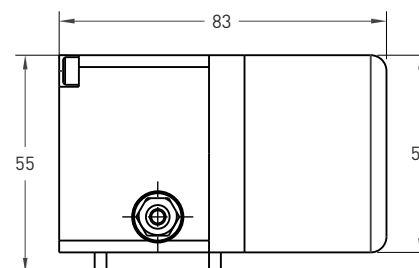
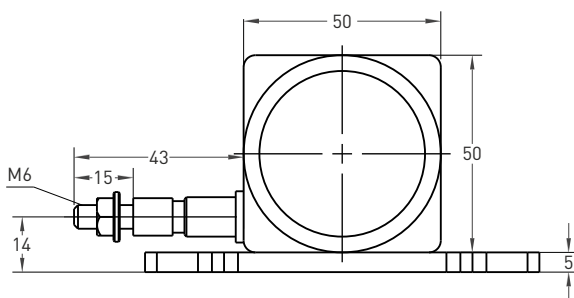
## Metal Case Draw Wire Encoder

- Measuring strokes 100 ... 1250 mm
- Incremental 50 µm / 25 µm resolution
- Push-Pull, TTL Linedriver or HTL Linedriver
- Easy mounting
- High protection degree



| Technical Specifications         |  |
|----------------------------------|--|
| Type of measurement              | Optical  |
| Resolution                       | 0,1 mm/ppr<br>0,2 mm/ppr.                                    |
| Measurement stroke               | 100 ... 1250 mm  |
| Output signal                    | A,B,Z or $\bar{A},\bar{A}, \bar{B},\bar{B}, \bar{Z},\bar{Z}$ |
| Output signal type               | Push-Pull, TTL Linedriver or HTL Linedriver                  |
| Supply voltage                   | 8 - 24 VDC, 5 VDC or 5 - 30 VDC                              |
| Power consumption (without load) | < 40 mA (24 VDC)   |
| Electrical connections           | 2.5 m cable (standard)                                       |
| Max. speed                       | 0,5 m/s  |
| Case material                    | Aluminium  |
| Weight                           | < 500 gr.  |
| IP degree                        | IP 54  |
| Operating temperature            | -20°C ... +80°C  |
| Storage temperature              | -30°C ... +90°C  |

### Mechanical Specifications



#### Push-Pull Cable Output

+V : Brown  
 0V : White  
 GND : Shield  
 Ch A : Yellow  
 Ch B : Green  
 Ch Z : Gray

#### TTL - HTL Linedriver Cable Output

+V : Brown  
 0V : White  
 GND : Shield  
 Ch A : Yellow  
 Ch B : Green  
 Ch Z : Gray  
 Ch A inv. : Blue  
 Ch B inv. : Red  
 Ch Z inv. : Pink

| Model | Case type | Measurement stroke                              | Output  | Resolution                               | Output signal      | Connector / Cable   | Cable output |
|-------|-----------|---|---|--|--------------------|---|--------------|
| DWEM  | 1         | 100   | LTP   | P1000                                    | Z                  | 2M5   | R            |
| DWEM  | 1         | 100 mm<br>300 mm<br>500 mm<br>700 mm<br>1250 mm | LTP: Push-Pull<br>TTL: TTL Linedriver<br>HTL: High Linedriver | P1000: 0,2 mm/puls<br>P2000: 0,1 mm/puls | Z: A,B,Z<br>B: A,B | 2M5: 2,5 meter cable<br>5M : 5 meter cable<br>8M : 8 meter cable<br>10M: 10 meter cable | R: Radial    |